

Weekly Performance

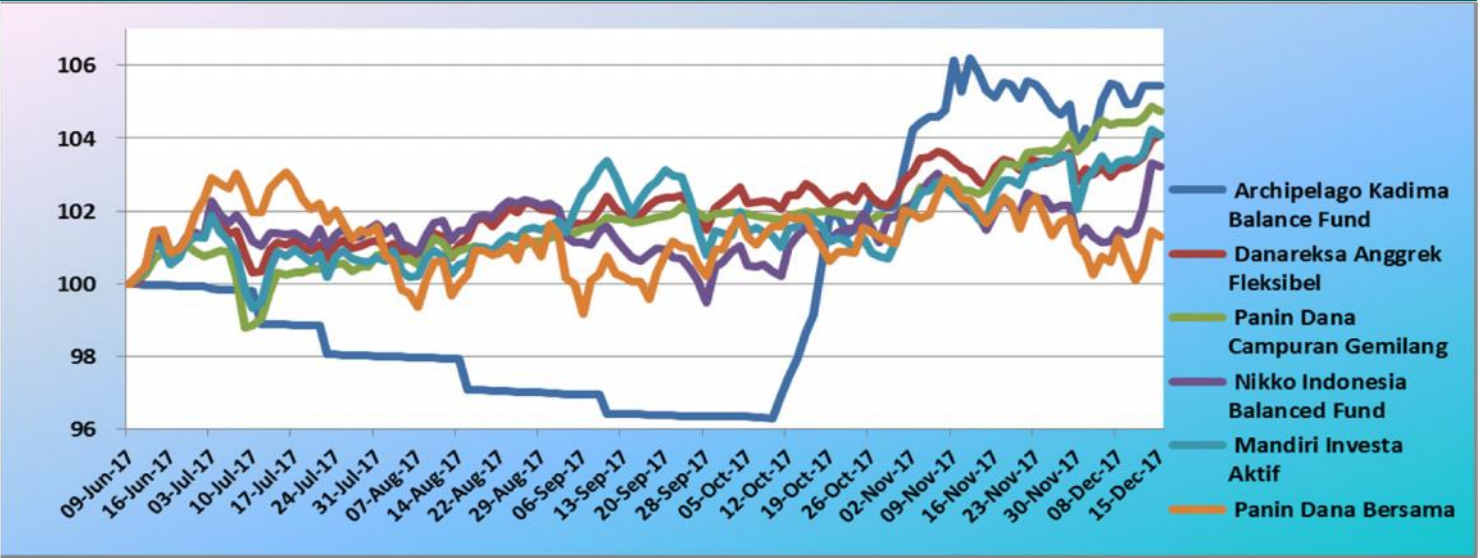
ARCHIPELAGO KADIMA BALANCE FUND

As of Dec 15th, 2017



1. Review

Performance of Archipelago Kadima Balance Fund (Since Inception)



2. Top 10 Best Performers (Since Inception)

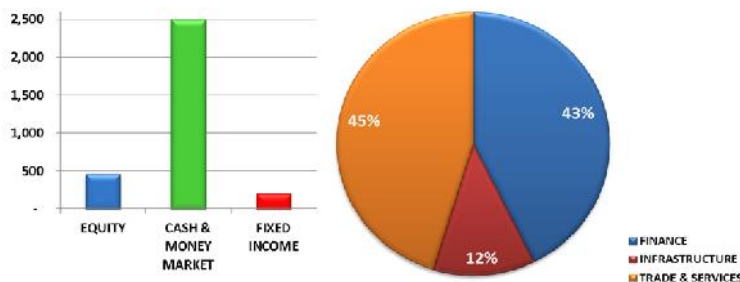
Since Inception

No	Name of Balance Fund	15-Dec-17	Growth
1	Star Balanced	2,853.56	12.96%
2	SAM Dana Kombinasi	1,187.52	12.57%
3	Minna Padi Keraton II	1,219.71	10.79%
4	Syailendra Indo Balance Fund	1,934.67	10.08%
5	Minna Padi Keraton Balance	3,230.56	8.96%
6	Millenium Balance Fund	473.73	8.53%
7	LQ45	1,030.11	8.38%
8	HPAM Premium-1	1,346.46	8.16%
9	Sucorinvest Anak Pintar	1,135.86	8.04%
11	JCI	6,119.42	7.82%
44	Archipelago Kadima Balance Fund	1,054.55	5.45%

YTD

No	Name of Balance Fund	15-Dec-17	Growth
1	Sucorinvest Flexi Fund	3,871.79	25.87%
2	HPAM Flexi Plus	2,077.72	19.73%
3	Syailendra Indo Balance Fund	1,934.67	18.52%
4	HPAM Premium-1	1,346.46	17.10%
5	Star Balanced	2,853.56	16.92%
6	Schroder Dana Campuran Progresif	1,581.71	16.70%
7	Batavia Prima Campuran	1,777.60	16.36%
8	JCI	6,119.42	15.53%
9	Mandiri Aktif	1,498.09	15.32%
10	MaestroBerimbang	5,763.72	14.47%
71	Indeks Reksa Dana Campuran	6,321.87	7.32%

3. Asset Allocation



4. Performance Highlight

% Growth	1W	1M	3M	9M	1Y
AKF	0.02%	-0.33%	9.37%	#N/A	#N/A
IRDC	0.86%	0.51%	1.36%	4.90%	7.13%

PT Archipelago Asset Management

Sucaco Building 5th Floor

Jl. KebonSirihKav. 71Jakarta 10340

P: +62 21 31 000 78 | F: +62 21 315 19 16

Info.aam@archipelago.co.id | www.archipelago.co.id

DISCLAIMER

"The information contained herein has been compiled from sources that we believe to be reliable. No warranty, whether expressed or implied, is made to the accuracy or completeness of the information. All opinions and estimations included in this report constitute a subjective assessment of PT Archipelago Asset Management as of this date, without regards to its fairness, which are subject to change without notice. This document has been prepared for general information only, without regards to the specific objectives, financial situations and needs of any particular person who may receive it. No responsibility or liability whatsoever or howsoever arising is accepted in relation to the contents hereof by any company mentioned herein, or any their respective directors, officers or employees. This document is not an offer to sell or a solicitation to buy any securities. This document is not investment advisory nor solicitation or explanation of our investment products, products term sheets or offering materials, but merely a general economic or financial research, without any single securities recommendations or specific financial instruments or issuers. PT Archipelago Asset Management and its affiliates and their officers and employees may (i) have a position, make markets, act as principal or engage in transaction in securities or related investments of any company mentioned herein, (ii) perform services for or solicit business from any company mentioned herein, and (iii) have acted upon or used any of the recommendations herein, before they have been provided to you. In deciding whether to invest, you shall not rely on any information provided herein and should make your own investigations and is encouraged to seek assistance from, as well as consult to, experienced professionals in matters relating to investments. None of this material (the "Materials") or their contents have been registered or filed under the securities laws or with the securities regulatory authorities of any jurisdiction. This Materials do not constitute offers or sales and are for information and/or educational purposes only. The Materials have not been approved or rejected by the Indonesian Capital Market and Financial Institution Supervisory Agency (Badan Pengawas Pasar Modal dan Lembaga Keuangan - "BAPEPAM-LK"), and BAPEPAM-LK has not passed on or endorsed the merits of this Materials or the accuracy or the adequacy of the Materials."