

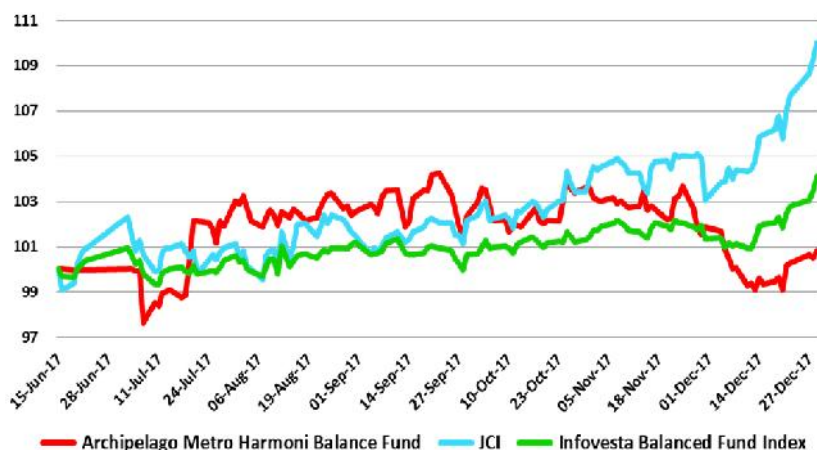
# FUND FACT SHEET

## ARCHIPELAGO METRO HARMONI BALANCE FUND

January 2018 (For Period ended December 29<sup>th</sup>, 2017)



### Fund Performance since Inception



### Fund Information

Inception Date	Jun 15, '17
NAV/Unit (12/29)	IDR 1,008.32
Fund Currency	Indonesian Rupiah (IDR)
Custodian Bank	PT Bank CIMB Niaga Tbk
Custodian Fee	Max. 0.12% pa
Subscription Fee	Max. 2.00%
Redemption Fee	Max. 2.00%

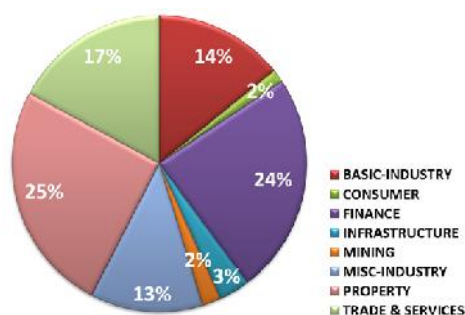
### Asset Allocation

Cash & Money Market	18%
Equity	75%
Fixed Income	7%

### Top 5 Holdings

Elang Mahkota Teknologi Tbk.	EMTK
Astra Otoparts Tbk.	AUTO
Bank Permata Tbk.	BNLI
Kresna Graha Investama Tbk.	KREN
Nusa Raya Cipta Tbk.	NRCA

### Sector Allocation



### Our Review

**Happy New Year 2018.** Di akhir tahun 2017 IHSG ditutup di level 6355.65 naik 6.779% dibandingkan penutupan November 2017. Kenaikan ini ditopang sektor "Consumer Goods" naik 11.961%, diikuti sektor "Manufacturing" +9.709% dan sektor "Basic Industry" +9.379%. Hanya sektor "Agriculture" yang mengalami penurunan sebesar -4.542%. Index market global Hang Seng mengalami kenaikan cukup significant +2.906%, Dow Jones +1.841% dibandingkan bulan sebelumnya. Nikkei 225 mengalami penurunan -0.237%. Dari pasar komoditas, seperti laju IHSG dan bursa global, harga beberapa komoditas pun mayoritas bergerak menguat yang dipimpin oleh harga Nikel, harga Nikel melonjak 10.95%, Aluminium 9.528% sedangkan Crude Oil WTI melonjak +5,261%. Dari dalam negeri, Lembaga Pemeringkat Rating Internasional Fitch Ratings kembali menaikkan peringkat utang Indonesia dari 'BBB-' menjadi 'BBB' dengan outlook stabil. Bank Sentral Indonesia, Bank Indonesia (BI) menyatakan hingga akhir tahun 2017 pertumbuhan ekonomi rata-rata sebesar 5,05%. Angka ini naik bila dibandingkan tahun 2016. Walau ada perbaikan tapi agak melambat. Beberapa hal yang harus dicermati yang dapat menimbulkan resiko adalah keberlanjutan perdagangan internasional di 2018, beberapa ketidakpastian kebijakan perdagangan di negara maju seperti kebijakan di AS yang mempengaruhi kegiatan proteksi dan ada beberapa kemunduran ekonomi seperti China. Dari pasar Surat Utang, hingga akhir tahun 2017, pasar surat utang mencatatkan pertumbuhan total return sebesar 16,54% dimana pasar surat utang negara memberikan return sebesar 16,86% dan pasar obligasi korporasi memberikan return 14,32%. Surat utang Indonesia mencatatkan pertumbuhan yang cukup besar dibandingkan surat utang negara regional lainnya.

% Growth	1W	1M	3M	1Y	YTD	Since Inception
AMH	0.56%	-0.97%	-0.62%	#N/A	#DIV/0!	0.83%
JCI	2.16%	4.69%	8.81%	0.20	#DIV/0!	10.03%
IRDC	1.26%	2.30%	4.10%	9.39%	#DIV/0!	4.10%



### DISCLAIMER

"The information contained herein has been compiled from sources that we believe to be reliable. No warranty, whether expressed or implied, is made to the accuracy or completeness of the information. All opinions and estimations included in this report constitute a subjective assessment of PT Archipelago Asset Management as of this date, without regards to its fairness, which are subject to change without notice. This document has been prepared for general information only, without regards to the specific objectives, financial situations and needs of any particular person who may receive it. No responsibility or liability whatsoever or howsoever arising is accepted in relation to the contents hereof by any company mentioned herein, or any their respective directors, officers or employees. This document is not an offer to sell or a solicitation to buy any securities. This document is not investment advisory nor solicitation or explanation of our investment products, products term sheets or offering materials, but merely a general economic or financial research, without any single securities recommendations or specific financial instruments or issuers. PT Archipelago Asset Management and its affiliates and their officers and employees may (i) have a position, make markets, act as principal or engage in transaction in securities or related investments of any company mentioned herein, (ii) perform services for or solicit business from any company mentioned herein, and (iii) have acted upon or used any of the recommendations herein, before they have been provided to you. In deciding whether to invest, you shall not rely on any information provided herein and should make your own investigations and is encouraged to seek assistance from, as well as consult to, experienced professionals in matters relating to investments.

None of this material (the "Materials") or their contents have been registered or filed under the securities laws or with the securities regulatory authorities of any jurisdiction. This Materials do not constitute offers or sales and are for information and/or educational purposes only. The Materials have not been approved or rejected by the Indonesian Capital Market and Financial Institution Supervisory Agency (Badan Pengawas Pasar Modal dan Lembaga Keuangan - "BAPEPAM-LK"), and BAPEPAM-LK has not passed on or endorsed the merits of this Materials or the accuracy or the adequacy of the Materials."